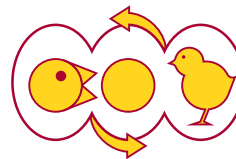
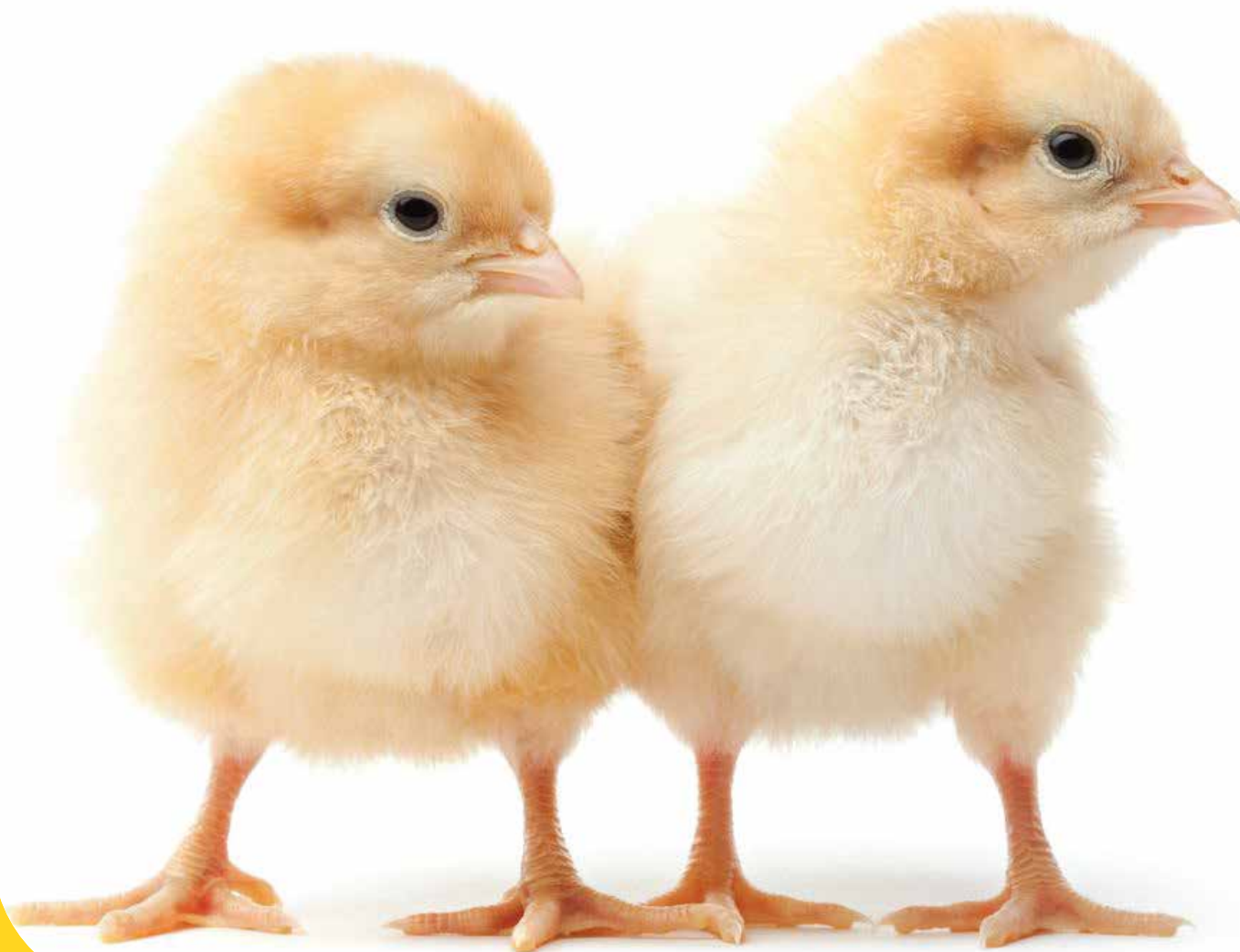


DOLs



**BEL GA**

*"Quality chicks, healthy life"*  
*Gà con chất lượng, cuộc sống khỏe mạnh*



Version 2020

**EVERY FARMER  
NEEDS A  
RELIABLE  
PARTNER TO BE  
SUCCESSFUL,  
AND BEL GA CAN  
BE YOURS**

# **BEL GA**

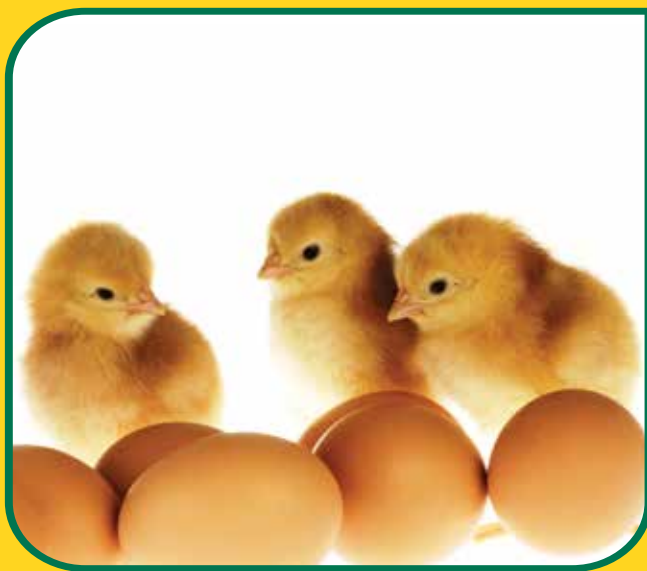
**Produces and supplies day-old layers (DOLs)**

Bel Ga was established in 2013 in Vietnam and in 2017 in Myanmar, specialized in producing Day Old Chickens and Day Old Layers for the Vietnamese, Burmese and Cambodian farmers. These chicks originate from breeding companies Aviagen and Hendrix Genetics.

Bel Ga is strongly supported by two family-owned European companies, which are highly experienced in the poultry business.

Belgabroed is Belgium market leader in producing premium day old chicks, day old layers and hatching eggs. They are one of the key players in Western Europe with more than 80 years of experience.

De Heus Group, a worldwide supplier in producing animal feed product with more than 100 years of experience.





## **BOVANS BROWN**

- It is the bird with a quite temperament.
- Good appetite and very suitable in our breeding systems.
- Bovans Brown gives high egg numbers with higher egg size and good egg quality.

# PERFORMANCE ACHIEVEMENT (BOVANS BROWN)



## BOVANS BROWN

Laying period (18-90 weeks)

Liveability 95 %

Age at 50% production 143 Days

Peak percentage 96 %

Average egg weight 63.3 g

Egg number hen housed 418

Egg mass hen housed 26.5 Kg

Average feed consumption 114 g/day

Feed conversion 2.15 kg/kg

Body weight 2000 g

Shell strength 4050 g/cm<sup>2</sup>

Shell color 15.0 Lab

Haugh units 80



Weeks	Age in days	Feed intake per bird per day		Feed intake per bird cum.		Body weight	
		Minimum	Maximum	Minimum	Maximum	Minimum	Maximum
1		10	12	70	84	64	67
2	8 - 14	16	18	182	210	132	139
3	15 - 21	24	26	350	392	211	221
4	22 - 28	31	33	567	623	296	312
5	29 - 35	36	38	819	889	388	408
6	36 - 42	41	43	1,106	1,190	485	510
7	43 - 49	45	47	1,421	1,519	584	614
8	50 - 56	49	51	1,764	1,876	685	720
9	57 - 63	53	55	2,135	2,261	786	826
10	64 - 70	57	59	2,534	2,674	886	932
11	71 - 77	60	62	2,954	3,108	984	1,034
12	78 - 84	63	65	3,395	3,563	1,079	1,134
13	85 - 91	66	68	3,857	4,039	1,169	1,229
14	92 - 98	69	71	4,340	4,536	1,255	1,319
15	99 - 105	72	74	4,844	5,054	1,335	1,404
16	106 - 112	75	77	5,369	5,593	1,409	1,481
17	113 - 119	80	82	5,929	6,167	1,476	1,552
18	120 - 126	86	88	6,533	6,785	1,537	1,615

PER HEN DAY											
Weeks	% Lay	Egg weight (g)	Eggs mass per day (g)	Feed intake per day (g)	Feed conversion per week	Weeks	% Lay	Egg weight (g)	Eggs mass per day (g)	Feed intake per day (g)	Feed conversion per week
18	2.3	42.6	1.0	87	88.95	55	89.2	64.2	57.3	115	2.01
19	16.1	46.2	7.4	93	12.58	56	88.8	64.3	57.1	115	2.02
20	40.8	49.3	20.1	100	4.96	57	88.4	64.3	56.9	115	2.03
21	65.4	52.0	34.0	106	3.11	58	88.0	64.4	56.6	115	2.04
22	83.4	54.2	45.2	110	2.44	59	87.6	64.4	56.4	115	2.04
23	92.3	56.0	51.7	113	2.19	60	87.2	64.5	56.2	115	2.05
24	94.1	57.5	54.1	114	2.11	61	86.8	64.5	56.0	115	2.06
25	95.1	58.7	55.8	114	2.05	62	86.3	64.6	55.7	115	2.07
26	95.8	59.6	57.2	114	2.00	63	85.9	64.6	55.5	115	2.08
27	95.8	60.4	57.9	114	1.98	64	85.5	64.7	55.3	115	2.09
28	95.7	61.0	58.4	114	1.96	65	85.0	64.7	55.0	115	2.10
29	95.7	61.4	58.8	114	1.95	66	84.6	64.8	54.8	115	2.11
30	95.6	61.8	59.1	114	1.94	67	84.1	64.8	54.5	116	2.12
31	95.5	62.1	59.3	115	1.93	68	83.7	64.9	54.3	116	2.13
32	95.4	62.3	59.4	115	1.93	69	83.2	64.9	54.0	116	2.14
33	95.2	62.4	59.4	115	1.93	70	82.7	65.0	53.8	116	2.15
34	95.1	62.5	59.5	115	1.93	71	82.3	65.0	53.5	116	2.16
35	94.9	62.7	59.5	115	1.93	72	81.8	65.1	53.2	116	2.17
36	94.8	62.8	59.5	115	1.93	73	81.3	65.1	53.0	116	2.18
37	94.6	62.9	59.5	115	1.93	74	80.8	65.2	52.7	116	2.20
38	94.4	63.0	59.4	115	1.93	75	80.4	65.3	52.4	116	2.21
39	94.1	63.1	59.4	115	1.93	76	79.9	65.3	52.2	116	2.22
40	93.9	63.3	59.4	115	1.93	77	79.4	65.4	51.9	116	2.23
41	93.7	63.3	59.3	115	1.94	78	78.9	65.4	51.6	116	2.24
42	93.4	63.4	59.2	115	1.94	79	78.4	65.5	51.3	116	2.26
43	93.1	63.5	59.1	115	1.94	80	77.9	65.5	51.0	116	2.27
44	92.9	63.6	59.0	115	1.95	81	77.3	65.6	50.7	116	2.28
45	92.6	63.6	58.9	115	1.95	82	76.8	65.7	50.4	116	2.30
46	92.3	63.7	58.8	115	1.96	83	76.3	65.7	50.2	116	2.31
47	92.0	63.8	58.6	115	1.96	84	75.8	65.8	49.9	116	2.33
48	91.7	63.8	58.5	115	1.97	85	75.3	65.8	49.6	116	2.34
49	91.3	63.9	58.3	115	1.97	86	74.7	65.9	49.3	116	2.36
50	91.0	63.9	58.2	115	1.98	87	74.2	65.9	48.9	116	2.37
51	90.6	64.0	58.0	115	1.98	88	73.7	66.0	48.6	116	2.39
52	90.3	64.1	57.8	115	1.99	89	73.1	66.1	48.3	116	2.40
53	89.9	64.1	57.7	115	2.00	90	72.6	66.1	48.0	116	2.42
54	89.6	64.2	57.5	115	2.00						

# PER HEN HOUSE

Age in weeks	Eggs per bird cum.	Egg mass cum.	Feed intake cum. (kg)	Feed conversion cum.	% Liveability	Body weight (g)	Age in weeks	Eggs per bird cum.	Egg mass cum.	Feed intake cum. (kg)	Feed conversion cum.	% Liveability	Body weight (g)
18	0	0.0	0.6	88.95	99.9	1,576	55	227	14.0	29.6	2.11	97.4	1,965
19	1	0.1	1.3	21.51	99.9	1,630	56	233	14.4	30.4	2.11	97.3	1,967
20	4	0.2	2.0	9.84	99.8	1,676	57	239	14.8	31.1	2.11	97.3	1,969
21	9	0.4	2.7	6.18	99.7	1,713	58	245	15.2	31.9	2.10	97.2	1,971
22	15	0.8	3.5	4.61	99.7	1,750	59	251	15.6	32.7	2.10	97.1	1,973
23	21	1.1	4.3	3.83	99.6	1,767	60	257	15.9	33.5	2.10	97.1	1,975
24	28	1.5	5.1	3.39	99.5	1,782	61	263	16.3	34.3	2.10	97.0	1,976
25	34	1.9	5.8	3.12	99.5	1,796	62	269	16.7	35.1	2.10	96.9	1,978
26	41	2.3	6.6	2.92	99.4	1,809	63	275	17.1	35.8	2.10	96.9	1,980
27	47	2.7	7.4	2.78	99.3	1,821	64	280	17.4	36.6	2.10	96.8	1,981
28	54	3.1	8.2	2.67	99.3	1,831	65	286	17.8	37.4	2.10	96.7	1,982
29	61	3.5	9.0	2.59	99.2	1,841	66	292	18.2	38.2	2.10	96.7	1,984
30	67	3.9	9.8	2.52	99.1	1,850	67	297	18.6	39.0	2.10	96.6	1,985
31	74	4.3	10.6	2.46	99.0	1,858	68	303	18.9	39.7	2.10	96.5	1,986
32	81	4.7	11.4	2.42	99.0	1,866	69	309	19.3	40.5	2.10	96.5	1,987
33	87	5.1	12.2	2.38	98.9	1,873	70	314	19.7	41.3	2.10	96.4	1,988
34	94	5.5	13.0	2.34	98.8	1,879	71	320	20.0	42.1	2.10	96.3	1,989
35	100	6.0	13.8	2.31	98.8	1,885	72	325	20.4	42.9	2.10	96.3	1,990
36	107	6.4	14.6	2.29	98.7	1,891	73	331	20.7	43.6	2.11	96.2	1,991
37	113	6.8	15.4	2.27	98.6	1,896	74	336	21.1	44.4	2.11	96.1	1,991
38	120	7.2	16.2	2.25	98.6	1,901	75	342	21.4	45.2	2.11	96.1	1,992
39	126	7.6	17.0	2.23	98.5	1,906	76	347	21.8	46.0	2.11	96.0	1,993
40	133	8.0	17.7	2.22	98.4	1,911	77	352	22.1	46.8	2.11	95.9	1,993
41	139	8.4	18.5	2.20	98.4	1,915	78	358	22.5	47.5	2.11	95.9	1,994
42	146	8.8	19.3	2.19	98.3	1,919	79	363	22.8	48.3	2.12	95.8	1,995
43	152	9.2	20.1	2.18	98.2	1,923	80	368	23.2	49.1	2.12	95.7	1,995
44	159	9.6	20.9	2.17	98.2	1,927	81	373	23.5	49.9	2.12	95.6	1,996
45	165	10.0	21.7	2.16	98.1	1,931	82	378	23.8	50.6	2.12	95.6	1,996
46	171	10.4	22.5	2.15	98.0	1,935	83	384	24.2	51.4	2.13	95.5	1,997
47	178	10.8	23.3	2.15	98.0	1,939	84	389	24.5	52.2	2.13	95.4	1,997
48	184	11.2	24.1	2.14	97.9	1,942	85	394	24.8	53.0	2.13	95.4	1,998
49	190	11.6	24.8	2.13	97.8	1,946	86	399	25.2	53.7	2.13	95.3	1,998
50	196	12.0	25.6	2.13	97.8	1,949	87	404	25.5	54.5	2.14	95.2	1,999
51	203	12.4	26.4	2.12	97.7	1,953	88	409	25.8	55.3	2.14	95.2	1,999
52	209	12.8	27.2	2.12	97.6	1,956	89	413	26.1	56.1	2.14	95.1	2,000
53	215	13.2	28.0	2.12	97.6	1,959	90	418	26.5	56.8	2.15	95.0	2,000
54	221	13.6	28.8	2.11	97.5	1,962							

# GLOBAL G.A.P CERTIFICATE

In 2016, Be Ga was the first and sole holder of a GLOBAL G.A.P Poultry IFA (Integrated Farm Assurance) version 5.0 - 2 Standard Certificate in Vietnam for broilers. This was a milestone for our Company and a good opportunity to show our commitment to our customers by producing premium quality products under the Bel Ga name while protecting the environment during production. The products are ensured to be safe and traceable along the entire production chain.

The issue of food safety is becoming increasingly important in Vietnam. That is why it is a part of our mission to contribute to the production of SAFE, AFFORDABLE AND TRACEABLE poultry products for end consumers in Vietnam and South East Asia.

Every year Bel Ga PS farms and hatchery have been continued getting GLOBAL G.A.P certified in order to ensure for safe and traceable poultry products along the entire value chain.



## INNOVATIVE AND MODERN TECHNOLOGY

The construction, design and equipment of our breeder farms have been carefully chosen by European and local experts to result in a farm with modern, closed poultry houses and high-quality equipment from Europe. Each farm is equipped with a poultry computer named ORION, by which the climate and other parameters can be monitored and controlled.

All the equipment used in our hatcheries are the most modern available worldwide. All the equipment used in our hatcheries are the most modern available worldwide. Our incubators, climate control system and premium management system provided by PETERSIME, well - known for their leading position and innovation in this market. BIOSTREAMER is the top incubator model, known for creating the optimal environment for hatching eggs into healthy day-old chicks and day-old layers. Adequate climate control is crucial for hatchability, chick quality and bio-security. Embryos and chicks need sufficient fresh air, a suitable environmental temperature and an adjustable humidity level. EAGLE EYE is an integrated management system to monitor and control all parameters inside the hatcheries.



## QUALITY MANAGEMENT

Our company's ambition is to produce premium quality day old layers following European standards. Our quality management starts with a high level of biosecurity to keep our livestock free of diseases. With low density of livestock in our region, Bel Ga is able to produce high quality hatching eggs - the initial stage of energetic chicks that provide the best productivity and efficiency to the farms.

Imported day old chicks of parent stock are Ross 308 and Bovans Brown supplied by the highly specialized breeding organizations Aviagen and Hendrix Genetics. The imported parent chicks meet all vaccination and health obligations as required by the Vietnamese law. The Company has constructed different types of rearing and production houses which meet the requirements for both breeds.

Together with quality management according to European standards, we can trace our chicks via BIS (Breeder Information System) and APROS. Our management is trained and guided by European specialists who visit our facilities regularly.

### BEL GA MYANMAR LTD

Head Office: Plot No 312, 313, 314  
Myaung Dakar Industrial Zone,  
Hmawbi Township, Yangon, Myanmar.  
Tel: +95 996 180 9770  
Email: [info.myanmar@belgaasia.com](mailto:info.myanmar@belgaasia.com)



## CUSTOMER SUPPORT

It takes knowledge, passion and dedication to produce premium quality chicks for our customers.

We are a reliable and excellent day-old layer supplier. Our job is not finished after our chicks are delivered to the farms and we are continuing to share our knowledge to help our customers achieve the best results by giving advice and providing improvements on technical management.

## TOGETHER WITH OUR CLIENTS, WE AIM TO PREPARE FOR THE FUTURE

### BEL GA VIETNAM

Head Office: Loc Son IZ, Bao Loc city,  
Lam Dong province, Vietnam.  
Tel: +84 263 371 0099  
Email: [info.vietnam@belgaasia.com](mailto:info.vietnam@belgaasia.com)